

Int Poster J Dent Oral Med 2006, Vol 8 No 04, Poster 334

# Finite Element Simulation of the Human Mandible: The Influence of the PDL on its Structural Behaviour

**Language:** English

**Authors:**

Prof. Dr. Cornelia Kober, Ph.D.

Faculty of Engineering and Computer Science, University of Applied Science Osnabrueck

Dr. Stefan Stübinger

Department of Maxillofacial and Facial Plastic Surgery, Johann Wolfgang Goethe-University Medical School, Frankfurt

Bodo Erdmann,

Zuse Institute Berlin

Prof. Dr. Christian Hellmich

Institute for Mechanics of Materials and Structures, Vienna University of Technology (TU Wien)

Dr. Thomas Radtke

Faculty of Engineering and Computer Science, University of Applied Science Osnabrueck

Prof. Dr. Dr. Robert Sader

Department of Maxillofacial and Facial Plastic Surgery, Johann Wolfgang Goethe-University Medical School, Frankfurt

Prof. Dr. Dr. Hans-Florian Zeilhofer

University Clinic for Reconstructive Surgery, Department of Cranio- and Maxillofacial Surgery, University Hospital Basel

**Date/Event/Venue:**

4./5. November 2005

Das Mundhöhlenkarzinom. Bewährte Konzepte - Moderne Strategien.

20. Jahrestagung der Schweizerischen Gesellschaft für Kiefer- und Gesichtschirurgie

Le carcinome de la cavité buccale. Conceptions éprouvées - Stratégies modernes

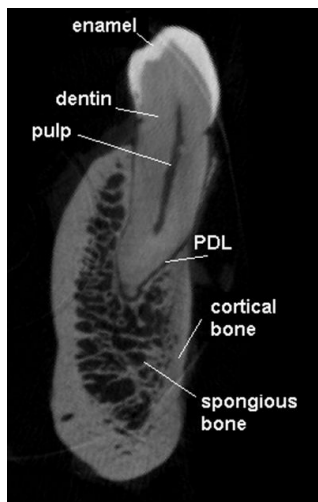
Basel, Switzerland



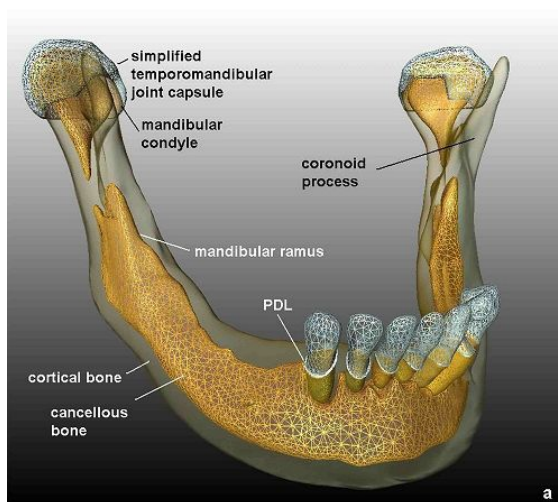
DGZMK-Poster-Award 2007 für das beste Poster in 2006

**Introduction**

This paper refers to a detailed research project concerning the structural mechanics of a human mandible dedicated to a stepwise refinement of the simulation model towards the anatomical reality. For its common pathological condition, the partially edentulous mandible of the female Visible Human [8], characterized by beginning atrophy of the alveolar ridge, was chosen as simulation example. The "periodontal ligament" (PDL) is a thin fibrous connective tissue of a thickness of about 0.2 mm present at the interface between teeth and the mandibular corpus (Figure 1). It surrounds the root of a tooth, separating it from and attaching it to the alveolar bone.



Micro-CT slice of a human premolar in vitro, resolution 160 µm x 160 µm x 320 µm [7].



FEA Model with integrated PDL and simplified temporomandibular joint capsules, transparent rendering of the cortical bone, altogether about 400.000 tetrahedra.

**Objectives**

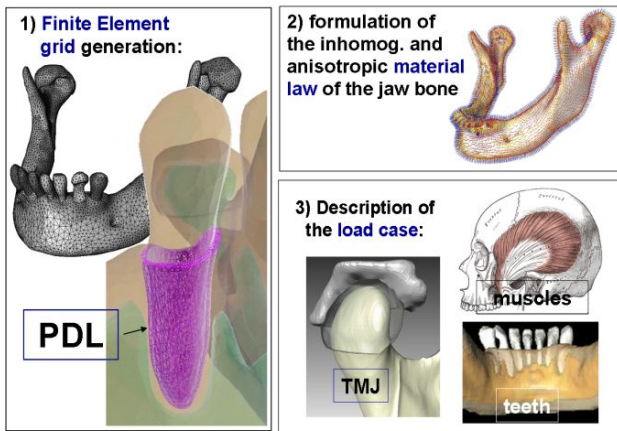
The article is dedicated to an analysis of the influence of the PDL on the structural behaviour of human jaw bone by means of finite element simulation of an entire mandibular model (Figure 2).

**Material and Methods**

In general, the preprocessing of the simulation consists in reconstruction of the individual anatomy, implementation of the inhomogeneous and anisotropic material law of bone, and realization of the load case due to teeth, muscle and joint forces (Figure 3). For the sake of the stepwise refinement towards anatomical reality being a key feature of the project, the mandible was modelled as inhomogeneous and anisotropic [4]. Further, individual muscular lines of action and simplified TMJ capsules were introduced [5,6].

Due to strongly varying dimensions, the PDL was reconstructed by a special semiautomatic procedure. As regards its adaptive viscoelastic material properties, during static biting, a reference to the higher Young's modulus within a "bilinear material approach" was chosen [2].

In order to guarantee reliability and efficiency of the simulation we applied the adaptive Finite Element code KASKADE [3,10]. The geometry reconstruction from 3D image data and all visualizations were performed with Amira 4.1. [1,9].

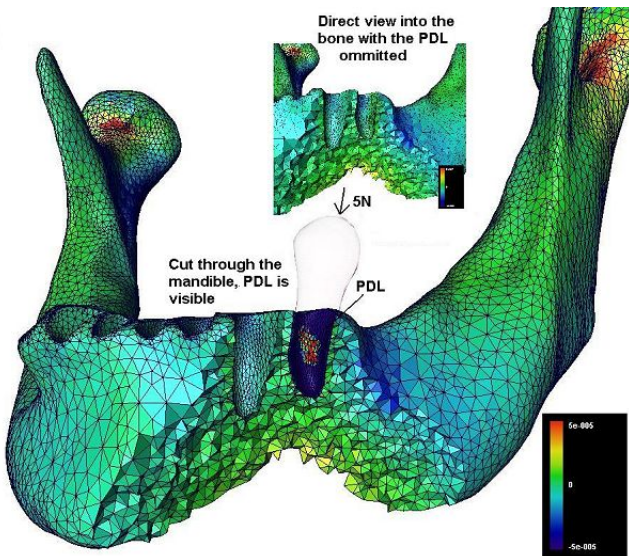


Prerequisites of the simulation.

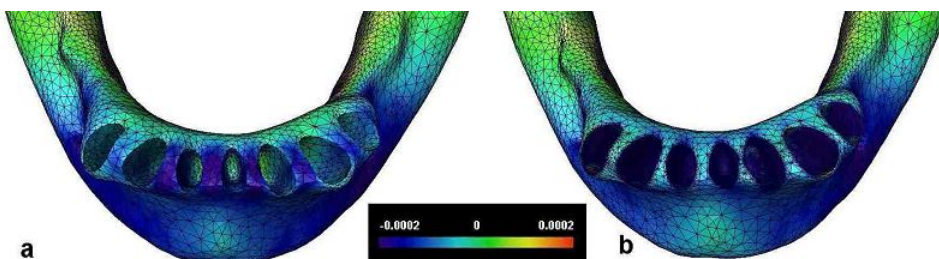
## Results

The simulation results proved remarkable force absorption due to the PDL (Figure 4) as well as qualitative changes of the stress/strain profiles of the alveolar ridge.

Concerning the simulation without PDL, observed high compressive strain at the adjacent bone were in agreement with regions of frequent implant failure (Figure 5).



Simulated volumetric strain due to an intrusion on the leftmost premolar (force: 5N), remarkable force absorption on behalf of the PDL can be stated.



Volumetric strain due to a bite on all teeth (a) without integrated PDL (b) with integrated PDL, view into the alveolar bone, teeth omitted.

## Conclusions

The simulation results confirmed that the PDL is essential for the structural behaviour of the human mandible. Based on the mechanical adaptation of bone, the comparison of the simulation with and without PDL provides special insight to the changes due to dental implants, in particular implant loss and bone resorption. Finally, the simulation will serve as virtual platform for evaluation (a) of implant design (b) of implant placement.

## Literature

1. Amira User's Guide and Amira Reference Manual, [www.amiravis.com](http://www.amiravis.com)
2. Dorow C, Krstin N, Sander FG, Determination of the Mechanical Properties of the Periodontal Ligament in a Uniaxial Tensional Experiment. *Orofac Orthop*, 64, 2003: 100-7.
3. Erdmann B, Lang J, Roitzsch R, KASKADE Manual. Technical Report TR 93-05, Konrad-Zuse-Zentrum Berlin (ZIB), 1993.
4. Kober C, Erdmann B, Hellmich C, Sader R, Zeilhofer HF. Consideration of anisotropic elasticity minimizes volumetric rather than shear deformation in human mandible. *Comp Meth Biomech Biomed Eng* April 2006; 9(2): 91-101.
5. Kober C, Erdmann B, Lang J, Sader R, Zeilhofer HF. Adaptive Finite Element Simulation of the Human Mandible Using a New Physiological Model of the Masticatory Muscles. *PAMM* 2004; 4: 332-3.
6. Kober C, Erdmann B, Lang J, Sader R, Zeilhofer HF. Sensitivity of the Temporomandibular Joint Capsule for the Structural Behaviour of the Human Mandible. *Biomed Tech - Biomed Eng* 2004; 49 Suppl 2: 372-3.
7. Kober C, Dorow C, Geiger M, Sader R, Zeilhofer HF, Sander FG. An interdisciplinary project on a fresh cadaver mandible. In: *The Finite Element Method in Biomedical Engineering, Biomechanics and Related Fields. Proceedings of the 10th Workshop [CD-ROM]; 2003 July 17-18; Ulm, Germany. University of Ulm.*
8. National Library of Medicine, The Visible Human Project, [www.nlm.nih.gov/research/visible/visible\\_human.html](http://www.nlm.nih.gov/research/visible/visible_human.html), 1995.
9. Stalling D, Westerhoff M, Hege HC, Amira: A Highly Interactive System for Visual Data Analysis. In: *The Visualization Handbook*, No. 38 (ed. Hansen CD, Johnson CR), Elsevier 2005, pp. 749-767.
10. [www.zib.de/Numerik/numsoft/kaskade/](http://www.zib.de/Numerik/numsoft/kaskade/)

*This Poster was submitted by Prof. Dr. Cornelia Kober.*

### Correspondence address:

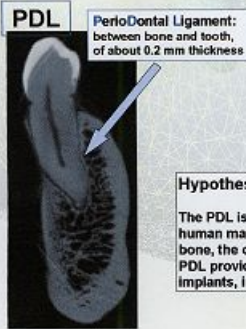
*Prof. Dr. Cornelia Kober, Ph.D.*

Faculty of Engineering and Computer Science  
Univ. of Appl. Sc. Osnabrueck  
Albrechtstr. 30  
P.O. Box 19 40  
D-49009 Osnabrueck  
Germany

# Finite Element Simulation of the Human Mandible: The Influence of the PDL on its Structural Behaviour



C. Kober (a,f), S. Stübinger (b), B. Erdmann (c), C. Hellmich (d), T. Radtke (a), R. Sader (e,f) and H.-F. Zeilhofer (e,g)  
(a) Univ. Appl. Sc. Osnabrück, (b) Univ. Hosp. Basel, (c) ZIB Berlin, (d) TU Vienna, (e) Univ. Frankfurt, (f) HFZ, TU Munich



**PDL**  
**PerioDontal Ligament:**  
 between bone and tooth,  
 of about 0.2 mm thickness

**Introduction:**  
 The article is dedicated to the study of the influence of the PDL on the structural behaviour of human jaw bone by means of finite element simulation of an entire mandibular model, see Figure 1.

**Hypothesis:**  
 The PDL is essential for the structural behaviour of the human mandible. Based on the mechanical adaptation of bone, the comparison of the simulation with and without PDL provides special insight to the changes due to dental implants, in particular implant loss and bone resorption.

Figure 1: FEA Model with integrated PDL and simplified temporomandibular joint capsules, transparent rendering of the cortical bone, altogether about 400.000 tetrahedra.

## Materials and Methods:

Aimed at a stepwise refinement towards anatomical reality, the mandible was modelled as inhomogeneous and anisotropic. Further, individual muscular lines of action and simplified TMJ capsules were introduced.

Due to strongly varying dimensions within the mandible, the PDL was reconstructed by a special semiautomatic procedure. As regards its material law, during static biting, a reference to the higher Young's modulus within a bilinear material approach was chosen [1].

Adaptive Finite Element Simulation: KASKADE, see [www.zib.de/Numerik/numsoft/kaskade](http://www.zib.de/Numerik/numsoft/kaskade), Geometry reconstruction and visualization: Amira 3.1.1., see [www.amiravis.de](http://www.amiravis.de) [2]

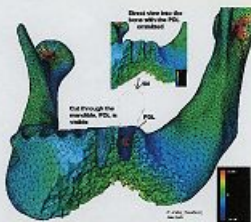
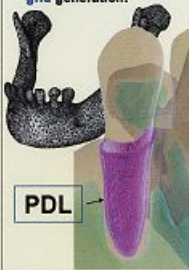
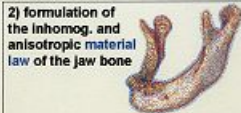
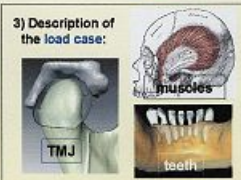


Fig.2: Simulated volumetric strain due to an intrusion on the leftmost premolar (force: 5N), remarkable force absorption on behalf of the PDL can be stated.

## Prerequisites of the simulation

- 1) Finite Element grid generation: 
- 2) formulation of the inhomog. and anisotropic material law of the jaw bone: 
- 3) Description of the load case: 

## Results and Conclusion:

The simulation results proved remarkable force absorption due to the PDL, see Figure 2, as well as qualitative changes of the stress/strain profiles of the alveolar ridge.

Concerning the simulation without PDL, observed high compressive strain at the adjacent bone were in agreement with regions of frequent implant failure, see Figure 3.

The simulation results confirmed the aforementioned hypothesis. Finally, the simulation will serve as virtual platform for evaluation (a) of implant design and (b) of implant placement.

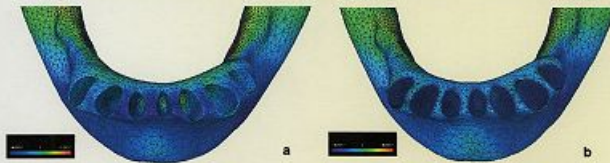


Figure 3: volumetric strain due to a bite on all teeth (a) without integrated PDL (b) with integrated PDL, view into the alveolar bone, teeth omitted

References:  
 [1] Dorow C., Kresin N., Sander F.-G., "Determination of the Mechanical Properties of the Periodontal Ligament in a Uniaxial Tensional Experiment", *Orofac Orthop*, 64, 2003, pp. 100-7

[2] Stalling, D., Westenhoff, M., Hege, H.-C., "Amira: A Highly Interactive System for Visual Data Analysis", in *The Visualization Handbook* (ed. Charles D. Hansen, Christopher R. Johnson), No. 35, Elsevier, 2005, pp. 749-767

Address:  
 C. Kober, FH Osnabrück,  
 Postfach 1610, D-49069 Osnabrück  
 Email: c.kober@fh-osnabrueck.de