

# Bonded by Genes: Unveiling Familial Florid Cemento-osseous Dysplasia - A Unique Case Report

## CASE 1

This case report highlights a 55-year-old female patient with pain and pus discharge from right side of face. The patient has diffuse bony lesions with areas of significant bone expansion and exposed mandibular alveolar bone covered with slough.

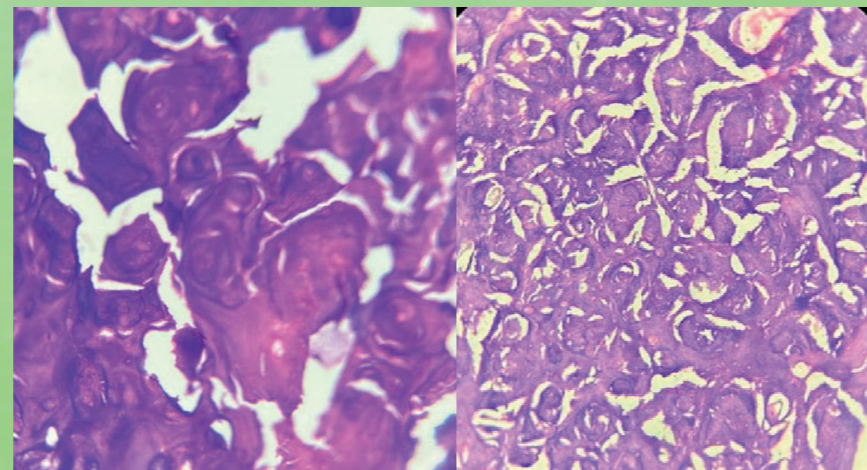


## RADIOGRAPHIC FEATURES

She was also subjected to CT scan which showed radioopaque masses scattered throughout the mandible and maxilla. Radiographic features were similar to chronic sclerosing osteomyelitis.

**Patient reported that her son also had similar problems.**

## HISTOPATHOLOGY



Formations of dense sclerotic calcified cementum-like masses. The lesion was composed of cementum-like substances characterised by islands of calcified deposits and areas of loose fibro-collagenous stroma.

## CASE 2

A 28-year-old male with spacing and malpositioned teeth. On extra-oral examination no abnormality was noticed except slight maxillary deficiency. Intraoral examination revealed a high frenum attachment between maxillary central incisors and missing 1st molars on both sides with a retained maxillary deciduous second molar on the left side.



Based on the history, clinical features, radiographic findings, and histological report, a final diagnosis of familial FCOD was made.