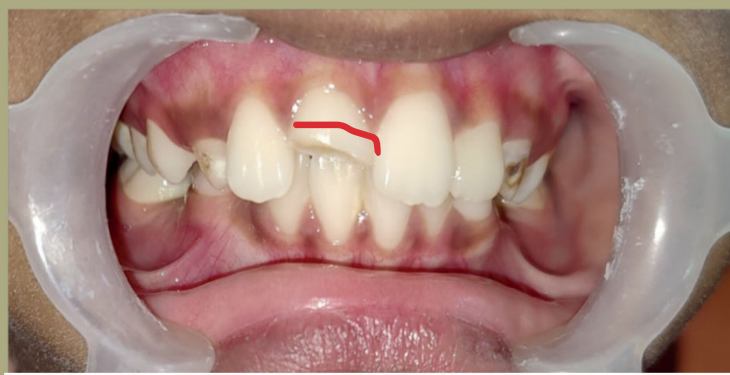


EFFECT OF PREDISPOSING FACTORS ON FRACTURE LINE OF CROWN IN DENTAL TRAUMA OF YOUNG INCISORS: A PILOT STUDY

BACKGROUND

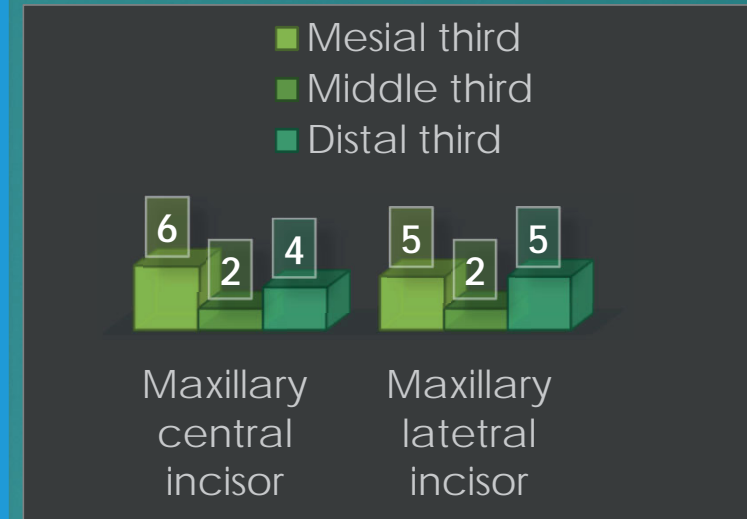
No previous epidemiological study has investigated the effect of predisposing factors of traumatic dental injuries (TDIs) on the type of crown fracture in young incisors among children residing in Gurugram. Such information is required for the planning and evaluation of health services. The aim of this case series was to assess the relationship of TDIs and associated factors among 8-15 year-old schoolchildren in Gurugram.

20 PATIENTS AGED 7-14 YEARS REPORTED TO THE DEPARTMENT OF PAEDIATRIC AND PREVENTIVE DENTISTRY, SGT UNIVERSITY, GURUGRAM, WERE OBSERVED FOR PREDISPOSING FACTORS LIKE AGE, GENDER, HISTORY OF TYPE OF FALL, HITTING OBJECT, DIRECTION OF TRAUMA AND STUDIED IN RELATION TO DIRECTION, EXTENT AND TYPE OF CROWN FRACTURE ALONG WITH STAGE OF DEVELOPMENT OF ROOT IN YOUNG INCISORS.

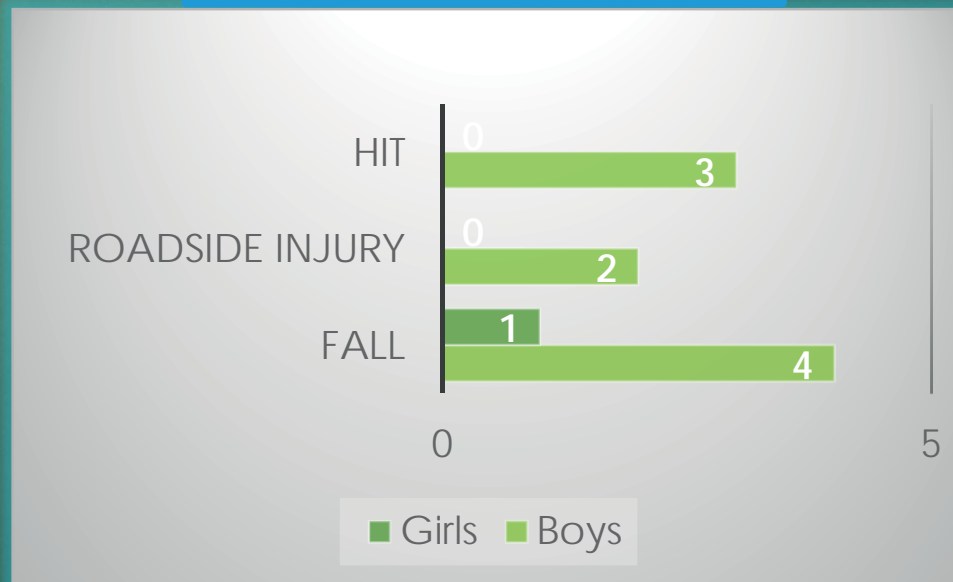


DISCUSSION RESULTS

It was observed that most TDIs occurred at home, followed by outside, i.e. on streets, markets, public play grounds, etc. The most commonly affected teeth were maxillary central incisors. Depending on the event's intensity, the tooth may be chipped, partially or completely dislocated, or even knocked out of the oral cavity.



REFERENCES



- Oyedele TA, Jegede AT, Folayan MO. Prevalence and family structures related factors associated with crown trauma in school children resident in suburban Nigeria. BMC oral health. 2016 Dec;16(1):1-7.
- Andreasen JO, Andreasen FM, Andersson L, editors. Textbook and color atlas of traumatic injuries to the teeth. John Wiley & Sons; 2018 Dec 17.
- Freire MD, Vasconcelos DN, dos Santos Vieira A, Araújo JA, da Silveira Moreira R, de Fátima Nunes M.